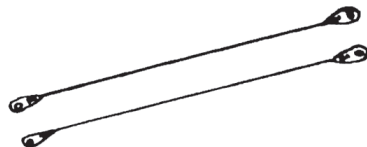
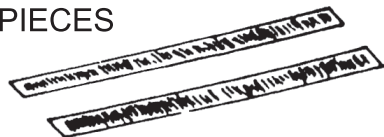


SPARE PARTS:



HEATERx2 PIECES



TEFLON CLOTHx2 PIECES

- a) Information regarding potential risks of fire, electric shock, or injury to persons that are capable of occurring due to use of the product. The instructions shall caution the user to place the product and connected cord so that it is not likely that the product will be overturned.
- b) Information regarding the potential risks of electric shock due to overrilling, the replacement of a lamp, or cleaning the product without disconnecting the power-supply cord.
- c) Instructions regarding the cleaning of the product, including any necessity for disassembly (and reassembly).

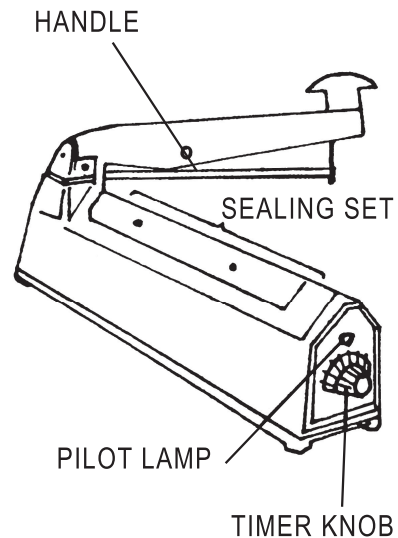
"Close supervision is required when this product is used near children"

IMPULSE SEALER

(100H, 200H, 300H, 400H, 520H)
(200HC, 300HC, 400HC, 500HC)

INSTRUCTION MANUAL

Thanks for your purchase of our impulse sealers. To obtain the benefit from our products. Please read the following instruction before operation.



HEATING ADJUSTMENT LIST

MATERIAL INDICATOR	POLYETHYLENE	POLYETHYLENE OR HIGH-HEAT FILM
1	UNDER 0.06m/m	
2	UNDER 0.1m/m	
3	UNDER 0.14m/m	
4	UNDER 0.2m/m	UNDER 0.03m/m
5		UNDER 0.44m/m
6		UNDER 0.06m/m
7		UNDER 0.08m/m

WARNING!!

To reduce the risk of shock, disconnect the unit from the supply circuit before servicing the replacement of the heating element.

OPERATION

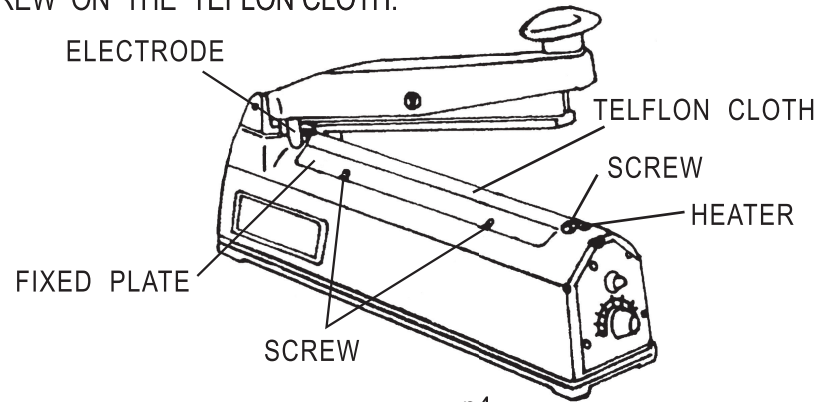
- PUT THIS MACHINE ON A LEVEL AND DRY WORK TABLE.
- PLEASE CHECK THE VOLTAGE OF POWER SOCKET, THEN INSERT THE POWER PLUG INTO SOCKET. TRY TO PRESS DOWN HANDLE KNOB AND TO EXAMINE THE PILOT LAMP IS LIGHTING OR NOT.
- ACCORDING TO MATERIAL VARIETY AND THICKNESS OF POLY-BAG, REGULATED HEATING TIME DURATION AT APPROPRIATE DEGREE.
- PUT A POLY-BAG ON THE HEATING ELEMENT OF THIS MACHINE, THEN PRESS DOWN HANDLE KNOB AFTER 1-2 SECONDS, THE PERFECT SEAL APPEAR. (SLIDE THE KNIFE COVER FINISHED CUTTING, 200HC. 300HC. 400HC. 500HC)
- IF THE SEALING APPEARANCE IS BREAK OR DAMAGE PLEASE REGULATE TIMER KNOB, TOWARD THE "S" SIDE AND TRY AGAIN TILL THE PERFECT SEAL APPEAR.
- IF THE SEALING APPEARANCE IS NON-FULL-WELD, PLEASE REGULATE TIMER KNOB TOWARD THE "L" SIDE AND TRY AGAIN TILL THE PERFECT SEAL APPEAR.
- IF THE POLY-BAG STICKS TO SEALING SILICON RUBBER, PLEASE SHORTEN THE SEALING PRESS TIME.

CAUTION

- KEEP CLEAN, ESPECIALLY THE CLEAN OF HEATER INSULATED CLOTH, UPPER CLOTH AND HEATING ELEMENT.
- DON'T BE WET OR HUMIDITY, FOR THE CAUSE OF ELECTRIC OBSTACLE.
- BEFORE OPERATION OR ON OPERATION', CHECK HEATER INSULATED CLOTH AND UPPER CLOTH. IF THEY ARE UNUSUAL, REPLACE IT AT ONCE, BECAUSE THE WORN HEATER INSULATED CLOTH AND UPPER CLOTH WILL MAKE ELECTRIC SHORTWAY ALSO WILL DAMAGE TO HEATING ELEMENT.
- WHILE REPLACED HEATING EXCELLENT MUST BE SAME SIZE AS ORIGINAL.
- WHILE SEALING APPEARANCE IS NOT ENOUGH EXCELLENT SHOULD REPLACE SEALING SILICON RUBBER.
- DON'T STRIKE POWERFULLY OTHERWISE THE BREAKDOWN WILL HAPPEN.
- WHEN USE EXCESSIVE. THE TEMP TURE TOO HIGH. SUSPEND A LITTLE WHILE.

INSTRUCTION FOR RELACING THE TEFLON CLOTH AND THE HEATER.

- REMOVE THE TEFLON CLOTH FROM THE FIXED PLATE. REPLACE WITH A NEW TEFLON CLOTH, SECURE THE FIXED PLATE WITH SCREWS.
- WHEN CHANGING THE HEATER, REMOVE THE TEFLON CLOTH AND UNSCREW THE HEATER. PLACE ONE END OF THE HEATER ON THE ELECTRODE AND SECURE THE OTHER END WITH SCREWS. THEN SCREW ON THE TEFLON CLOTH.



MALFUCTIONS

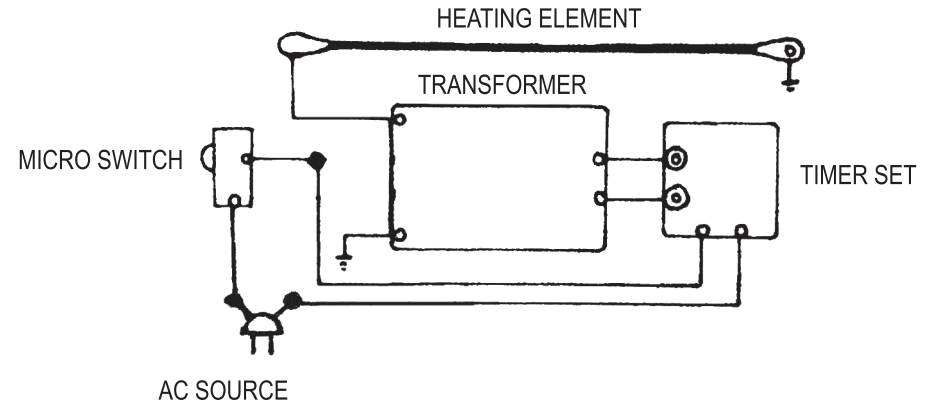
MALFUCTIONS	REASONS	SUGGESTIONS
POWER FAILURE OF THE HEATING WIRE AND PILOT	• DISCONNECTED PLUG	• CHANGE THE PLUG
	• SHORT OF AC CORD	• REPAIR OR REPLACE
	• AC CIRCUIT DISCONNECTED	• REPAIR AC CIRCUIT
POWER FAILURE BUT THE PILOT LAMP IS STILL ON	• HEATER BROKEN	• REPLACE THE HEATING WIRE
	• DISCONNECTED ELECTRODE SPRING	• REPLACE THE ELECTRODE WIRE OR CHECK VOLTAGE
PILOT LAMP STILL ON AND THE TEFLON CLOTH OVERHEATS	• TIMER MALFUNCTION	• CONTACT YOUR SUPPLIER
	• PROLONGED HEATING TIME	• DECREASE THE HEATING TIME
HEATING WIRE BROKEN SUDDENLY	• TOO FREQUENT OPERATION NEED APPROPRIATE COOLING PERIOD	• KEEP AT LEAST 1 SECOND AFTER THE LED LAMP OFF THEN PUSH THE HANDLE DAILY OPERATION SHOULD NOT EXCEED 1,000 TIMES
	• FRACTURED GLASS TAPE	• REPALCE THE GLASS TAPE

TO BE CONTINUED

p5

MPERFECT SEALING	• FRACTURED TEFLON CLOTH	• REPLACE THE TEFLON CLOTH
	• FRACTURED SILICON RUBBER	• REPLACE THE SILICON RUBBER
	• INADEQUATE COOLING PERIOD	• KEEP AT LEAST 1 SECOND COOLING TIME

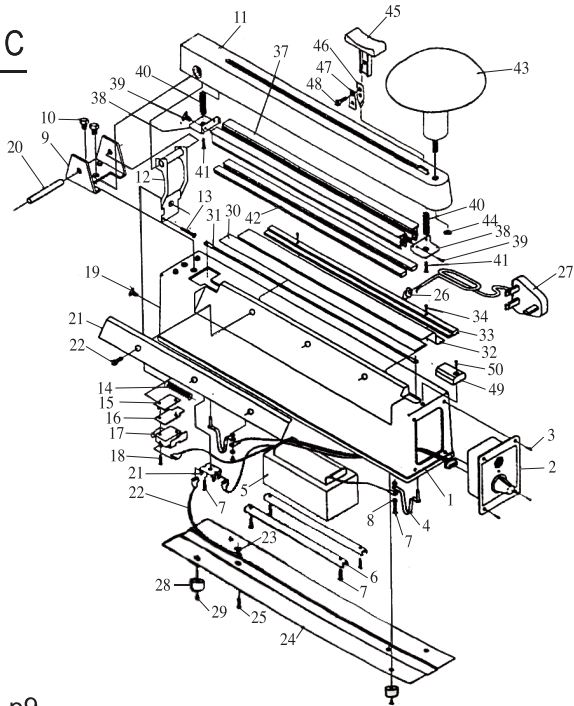
CONNECTION DIAGRAM



p6

200HC. 300HC. 400HC. 500HC

PART DIAGRAM



200HC, 300HC, 400HC, 500HC

ITEM	PARTS NAME	ITEM	PARTS NAME	ITEM	PARTS NAME
1	BODY	17-1	MICROSWITCH SPRING PLATE	35	TEFLON FIXED PLATE
2	TIMER	18	MICROSWITCH ASSEMBLED SCREW	36	TEFLON FIXED PLATE SCREW
3	SCREW	19	MICROSWITCH FIXED SCREW	37	SEALING BAR
4	BOW SPRING	20	HINGE PIN	38	SEALING BAR FIXED BRACKET
5	TRANSFORMER	21	WIRE CONNECTOR	39	SEALING BAR FIXED BRACKET SCREW
6	TRANSFORMER BRACKET	22	EARTH WIRE	40	SEALING BAR RETURN SPRING
7	SCREW	23	EARTH WIRE NUT, WASHER	41	SEALING BAR SCREW
7-1	SPRING WASHER	24	BASE PLATE	42	SILICON RUBBER (SEALING PAD)
8	PLASTIC WASHER	25	EARTH WIRE SCREW	43	HANDLE KNOB
9	HINGE BRACKET	26	BUSHING	44	HANDLE KNOB WASHER
10	SCREW	27	POWER CORD	45	BLADE HOLDER
11	ARM	28	RUBBER FOOT	46	CUTTER BLADE
12	ARM OPERATING BRACKET	29	RUBBER FOOT SCREW	47	BLADE FIXED PLATE
13	MICROSWITCH ADJUSTING SCREW	30	LOWER TEFLON (ADHESIVE)	48	BLADE FIXED SCREW. NUT
14	ARM RETURN SPRING	31	HEATING ELEMENT	49	HEATING ELEMENT COVER
15	MICROSWITCH BRACKET	32	UPPER TEFLON	50	HEATING ELEMENT COVER SCREW
16	INSULATED PLATE	33	TEFLON PLATE		
17	MICROSWITCH	34	TEFLON PLATE SCREW		